



ALUMA PHOTO PLATE Co.

Manufacturing High Quality Permanent Graphics for Demanding Industries

Aluma Photo Plate Co. is a manufacturer of extremely high quality, durable, attractive, product and equipment nameplates, instrument panels, model/serial number tags, foil decals, control panels, recognition & award plaques, compliance & Mil-Spec plates, interpretive signage and caution/warning/danger labels for your home, office, plant, industry, organizations, indoors-outdoors as well as harsh environments.

E-Mail: ken@alumaphoto-plateco.com • Website: www.alumaphoto-plateco.com



METALPHOTO®

THE most durable photo-anodized aluminum substrate.

We simply use the best materials that the nameplate industry has to offer which benefits you in:

- DURABILITY
- IMAGE QUALITY
- VERSATILITY



POLYCOLOR®

Multi-color photo-anodized aluminum substrate.



ALUMAJET®

Photo quality full-color inkjet printing on aluminum.

“MAKE THE RIGHT CHOICE”

Select one of these products to enhance the look and life of your product/equipment identification requirements today.



VINYLJET®

Photo quality full-color inkjet printing on vinyl.



ID MARK®

Excellent reproductions on a photo-sensitive aluminum & polyester.

9001 Airport Blvd. • Suite # 605 • Houston, TX 77061

Ph. (713) 943-8561 • Fx. (713) 943-8693

Toll Free 1-(866)-579-9096

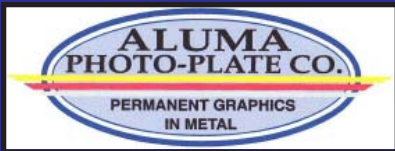
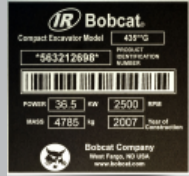


Photo-Anodized Aluminum provides
DURABILITY • RESISTANCE • PERFORMANCE
 when it really matters - when you need it!

Aluma Photo Plate Co. helps you **MAKE THE RIGHT CHOICE** by offering a variety of high quality processes to choose from. The result, **Product & Equipment plates that last!**



• **METALPHOTO®** - a **Two-color effect photo-anodized aluminum.**
 With (four) Finishes to choose from - MATTE, SATIN, #4, and GLOSS
 Available in sizes up to 24.0" x 40.0". **NOTE:** Not all thicknesses / finishes are available in the largest sizes shown.
 With (ten) Thicknesses to select from - .003" / .005" / .008" / .012" / .020" / .032" / .039" / .063" / .090" / .125".
 Base color is a natural **Silver / Gold / Copper** with **Black** graphics or background.



• **POLYCOLOR®** - a **One-color effect photo-anodized aluminum.**
 With (two) Finishes to choose from - MATTE, SATIN
 Available in sizes up to 20.0" x 24.0"
 With (five) Thicknesses to select from - .005" / .008" / .012" / .020" / .032"
 Base color available is a natural **Silver** with (14) single colors which can be printed.



• **ALUMAJET®** - a **Full-Color inkjet printed aluminum.**
 With (three) overlam Finishes to choose from - MATTE, SATIN, GLOSS
 Available in sizes up to 12.0" x 18.0"
 With (three) Thicknesses to select from - .005" / .012" / .020"
 Base colors available with the inkjet printed aluminum is **Silver / Gold / White**



• **VINYLJET®** - a **Full-Color inkjet printed vinyl.**
 With (three) overlam Finishes to choose from - MATTE, GLOSS, LEXAN
 Available in sizes up to 11.0" x 17.0"
 With (one) thickness of material to select from - .004"
 Base color available with the inkjet printed vinyl is **White**



• **I D MARK®** - a **Two-color photo-sensitive Polyester and Aluminum**
 With (three) overlam Finishes to choose from - MATTE, GLOSS, LEXAN
 Available in sizes up to 12.0" x 20.0"
 With (one) thickness of material to select from - .006" in Polyester and
 - .007" for the Aluminum.
 Base color is a natural **Silver** with dye colors available in (fourteen) variations.

APPLICATIONS

- Nameplates
- Control Panels
- Panelfronts
- Instrument Panels
- Compliance & Mil-Spec plates
- Serial / Model No. Tags
- Write-On / Type-On Labels
- Graphic Mural Display Panels
- Garden Fungshui Certificates
- Office Desk & Cubicle Nameplates
- Interpretive Signage
- Car / Boat / Motorcycle Club Awards
- Product & Equipment I D Plates
- Operating Procedure Labels
- Recognition & Award Plaques
- Plant / Tree I D Markers & Signs
- VIN, HIN and Vessel Plates
- Computer Logo Tags
- POP Sign Display Graphics
- Sports Recognition Plaques
- Shadow Boxes with Photoplate
- Architectural Renderings
- Fit-N-Fun Trail Signage
- Cemetery Memorial Photo Plates
- Caution / Warning / Danger Placards
- Load Charts, Radius Indicator Plates
- Scales / Dials / Faceplates
- Asset Tags
- UID / Bar Code Labels
- Interior Signage
- Exercise Equipment Plates
- Employee of the Month Award
- Highest Sales Award Plaque
- Diplomas & Certificates
- Newspaper Article Reproductions
- Exterior & Interior Signage

9001 Airport Blvd. • Suite # 605 • Houston, TX 77061

Ph. (713) 943-8561 • Fx. (713) 943-8693

Toll Free 1-(866)-579-9096

When
Long-Lasting
Performance
Counts -
Make the Right
Choice.

**PHOTO-ANODIZED
ALUMINUM!**

DURABILITY

QUALITY

VERSATILITY

**Permanent
Graphics in
Metal**

--ENVIRONMENTAL PROPERTIES--											
RESULTS KEY	TEST CONDITIONS	Abrasion Resistance	Solvent/Fuel Resistance	Temperature Resistance		Ultraviolet Light Resistance	Salt Spray/Immersion Resistance		Chemical Resistance		
		Taber Abraser with CS17 wheel, 1000 gram load for 7000 cycles.	Extended immersion in alcohol, kerosene, JP-4 fuel, hydraulic fluid, MEK and other organic solvents	> 400oF	> 750oF	400 Hour Weatherometer test recognized equivalent of 20 years outdoor exposure	Salt Spray testing with a 5% NaCl solution at 90oF for 700 hours	Immerse plates in sea water at ambient temp. for an extended time	Acid	Bases	
				< 750oF	< 1000oF				24 Hour immerse at room temp in 3% solution of nitric acid, sulfuric acid, ferric chloride	24 Hour immerse at room temp in 3% solution of Clorox.	24 Hour immerse at room temp in 3% solution of Sodium
● Excellent ● Acceptable ○ Not Recommended	FINISHED PLATE CHARACTERISTICS	Black & Aluminum Image Intensified	●	●	●	●	●	●	●	●	○
Black on Gold Background Image Intensified		●	●	●	●	●	○	○	●	●	○
Black & Aluminum Not Image Intensified		●	●	●	●	●	●	●	●	●	○
Black on Gold Background Not Image Intensified		●	●	●	●	●	○	○	●	●	○
Additional Background or Selective Colors		●	●	○	○	○	●	●	●	●	○



MOTOR TAGS & DATA PLATES

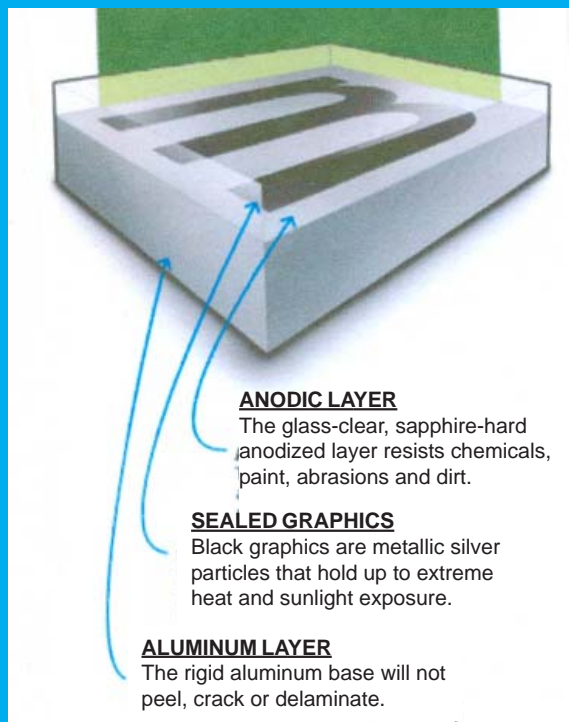


PLANT / TREE SIGNS



Mil-Spec & COMPLIANCE PLATES

**Photo-Anodized Aluminum
CROSS SECTION**



ANODIC LAYER

The glass-clear, sapphire-hard anodized layer resists chemicals, paint, abrasions and dirt.

SEALED GRAPHICS

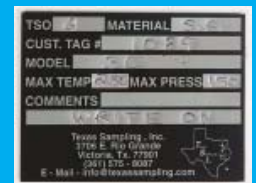
Black graphics are metallic silver particles that hold up to extreme heat and sunlight exposure.

ALUMINUM LAYER

The rigid aluminum base will not peel, crack or delaminate.



DATA CHARTS & CAPACITY PLATES



WRITE-ON / TYPE-ON LABELS

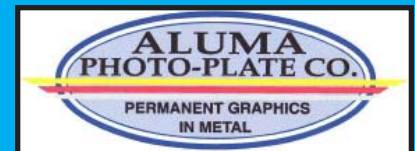


RECOGNITION & AWARD PLAQUES

INDUSTRY & GOVERNMENT PERFORMANCE CHARACTERISTICS:

Metalphoto®, photo-anodized aluminum meets and exceeds many DoD requirements including:

- Mil-Std-130N
- GGP-455B
- Mil-A-8625F
- Mil-DTL-15024F
- Mil-P-514D
- UL
- CSA
- ETL
- CE
- API Specs and others.



ALUMA PHOTO PLATE Co.

9001 Airport Blvd. • Suite # 605 • Houston, TX 77061

Ph. (713) 943-8561 • Fx. (713) 943-8693

Toll Free 1-(866)-579-9096

Aluma Photo Plate Co. has been manufacturing a variety of products for many Industries for over thirty years using the central material of *Photo-anodized aluminum*. This material is specified as the "material of choice" by engineers worldwide for their Nameplates, Decals, Product & Equipment Labels, Instrument Panels, Panelfronts, and many more requirements. This material, because of its ability to withstand many harsh extremes and hold up to many challenging environments, has been able to meet or exceed many Government, Commercial, Industrial, Military, Offshore and Aerospace specifications including MIL-STD 130N for the Dept. of Defense UID data matrix bar code applications.

Photo-anodized Aluminum material is described as "the most durable of aluminum identification plates" by the National Association of Graphic and Product Identification Manufacturers.

Photo-anodized aluminum is specified by many companies like Caterpillar, Motorola, Boeing Aircraft Co. and the Military. It is used wherever the appearance, legibility, and longevity of information plates is important. You will find Metalphoto® parts on aircraft brakes, Navy Destroyers, the International Space Station, restaurant equipment and outdoor signs. If you want your nameplates to last, "Make The Right Choice" - make it Photo-anodized aluminum.

INDUSTRIES

AEROSPACE

PETROCHEMICAL

INDUSTRIAL PLANTS

COMMERCIAL



MILITARY

FEDERAL
GOVERNMENT

OFFSHORE MARINE

NATIONAL PARKS

UID (unique item ID) Specifications

Dept. of Defense

Mil-Std-130N

Identification Marking of U.S. Military Property

Lockheed Martin

LMA-PN010

Fabrication of UID Nameplates for Aircraft Items

Industry Specificatons and Studies

BF Goodrich Aerospace

Data Systems Division

Specification SMT 0022

Boeing Commercial Aircraft Co.

Boeing Process Specifications BAC5875

Fabrication of Aluminum Markers, Instrument Panels,
Drawer Front Panels and Fabrication of Metal Appliques.

Honeywell, inc.

Satellite Systems Operations

Metalphoto approved for use on Space Station

Memorandum A3-J024-M-9501786

Laboratory Case 161311

SAE

Special requirements for Crew Interface
Labels on the International Space Station
Stephen Gray & Fernando Ramos - Boeing

U.S. Government Specifications

United States Federal Government

Federal Specification GGP-455B(3)

Type I (Grade A&B) Class 1 or 2

Dept. of Defense

Mil-P-19834B - General specifications for plates,
identification or instruction metal foil - adhesive backed.

Dept. of NAVY

Laboratory evaluation of label plate material and attachment
methods considered for use on :PD-17 CARD/VNSWC-TR-
62-00 - June 2000.

NASA

Johnson Space Center, TX.

Space Station Inventory Label
specification - SSP 50007.

Dept. of Defense

Commercial Item Description

A-S-50271 Class 2 - Composition C



Serving Offshore Marine, Aerospace, Military,
Federal Government, Industrial-Commercial,
Museums, Arboretums, National Parks
and Petrochemical Industries since 1979.